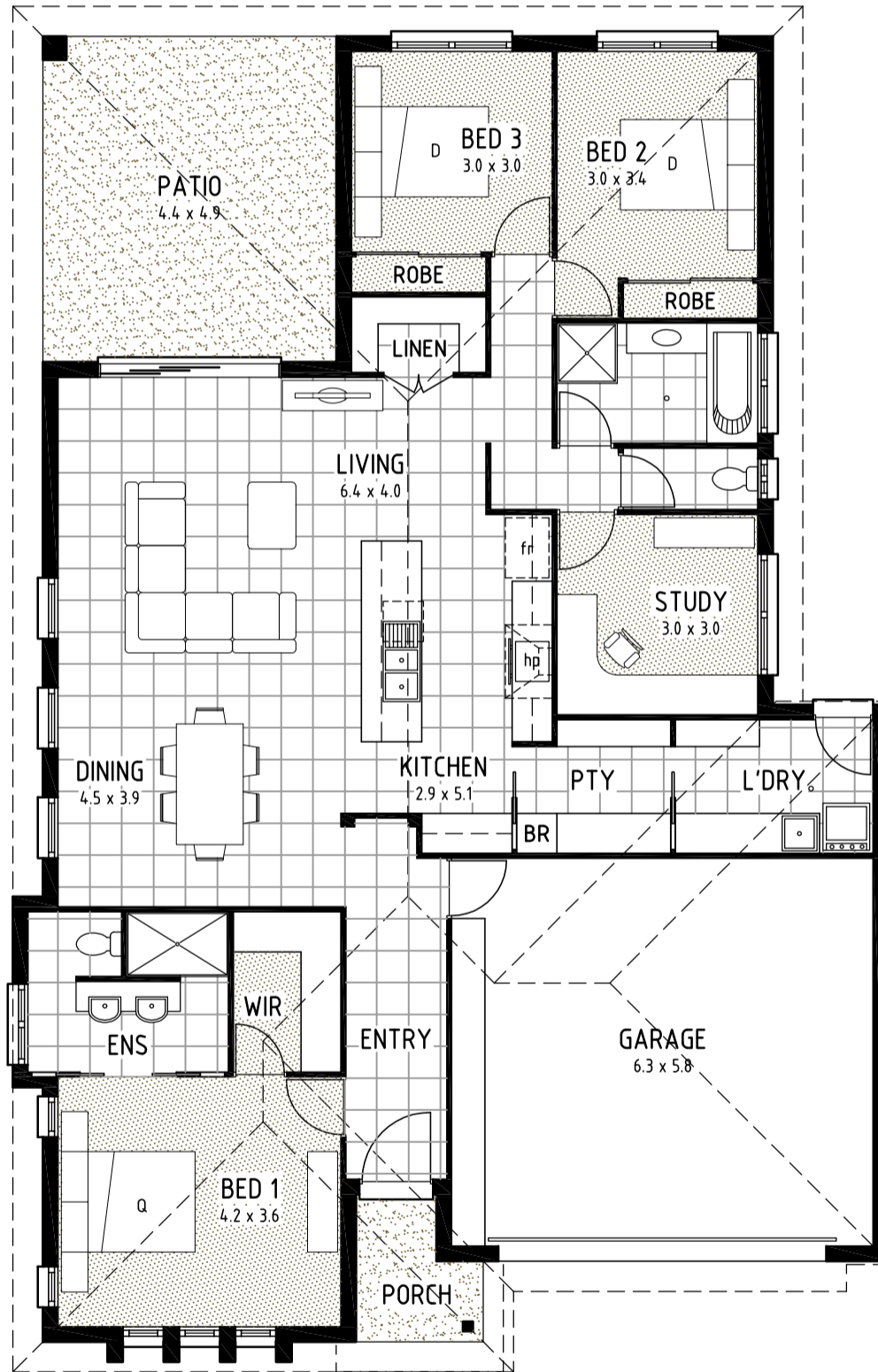




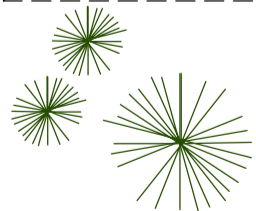
13080
(OVERALL)



19515
(OVERALL)

Areas:	
Residence:	198.4sqm
Porch:	3.5sqm
Patio:	21.4sqm
Total:	223.3sqm

FLOOR PLAN



[Inclusions](#)

Alroma Homes
Affordable Quality



PO Box 934
Hervey Bay QLD 4655
t (07) 4128 0204 • 0408 982 044
e alroma1@bigpond.com

489 79 088 951 022
522 L.L. No. 110000

Alan Montier

© COPYRIGHT

THIS DESIGN IS THE COPYRIGHT OF
' HERVEY BAY DESIGN GROUP '
AND IS FOR THE EXCLUSIVE USE OF
'ALROMA HOMES.'